

Mobile Axial Hydraulic Pumps

Variable Displacement Load Sense Control

Certified Power
SOLUTIONS®

High-performance solutions for mobile demands

Series 45 pumps are a high efficiency alternative to traditional open circuit pumps. Each frame size is uniquely designed to optimize performance, size, and cost, while matching the demanding requirements of the mobile equipment market.

Series 45 pumps are designed to fit the needs of open circuit systems capable of speeds up to 3600 RPM, maximum pressures up to 400 bar, and continuous pressures up to 310 bar (4500 psi).

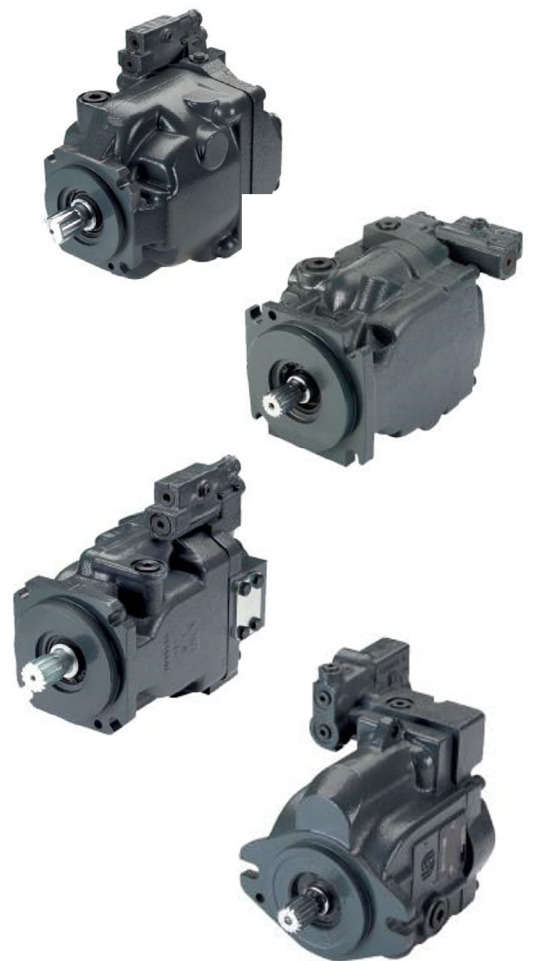
Designed for Durability and Flexibility

- Heavy duty tapered roller bearings for long life
- Single-piece, rigid housing reduces leak paths and noise
- Designed and manufactured to meet rigorous mobile equipment standards
- Displacements ranging from 25 to 147 cm³/rev (1.53–8.97 in³/rev)

Installation and Packaging Benefits

- Compact design minimizes installation space requirements
- Wide range of mounting flanges, shafts, and porting options
- Robust input shaft bearings to handle large external loads
- Low noise for operator comfort

Danfoss



06.03.2025 / Certified Power Solutions

Perrysburg, OH
(419) 873-7411
Fridley, MN
(952) 894-5700

Mundelein, IL
(847) 573-3800
Bridgeton, MO
(314) 344-3300

Des Moines, IA
(515) 244-7411
Dickinson, ND
(701) 225-8685



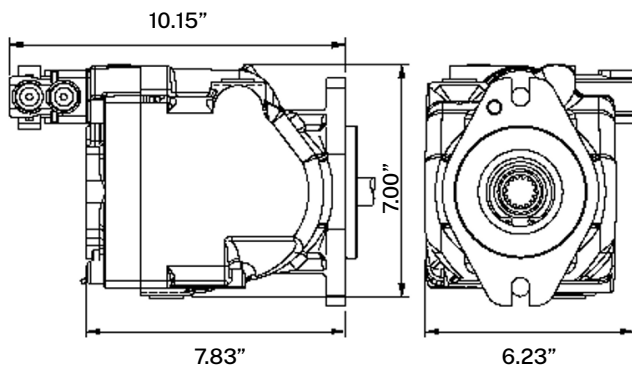
SCAN ME

Mobile Axial Hydraulic Pumps

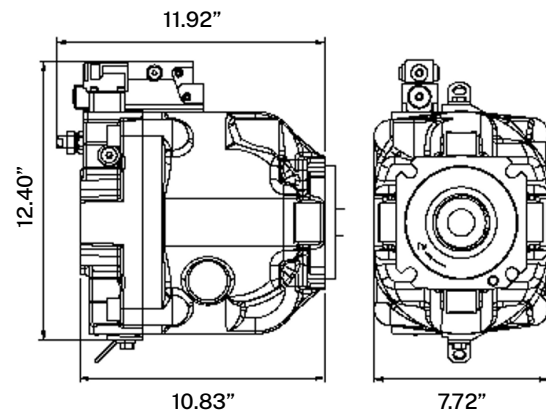
Variable Displacement Load Sense Control

Certified Power
SOLUTIONS®

Pump Model		Frame L		Frame K		Frame J		
Maximum displacement	cm ³ [in ³]	25 [1.35]	30 [1.83]	38 [2.32]	45 [2.75]	45 [2.75]	51 [3.11]	60 [3.66]
Cont. working pressure	bar [psi]	260 [3770]	210 [3046]	260 [3770]	210 [3046]	310 [4500]	310 [4500]	310 [4500]
Max. working pressure		350 [5075]	300 [4350]	350 [5075]	300 [4350]	400 [5800]	400 [5800]	400 [5800]
Continuous input speed	min ⁻¹ (rpm)	3200	3200	2650	2650	2800	2700	2600
Theoretical flow	l/min [US gal/min]	80 [21.1]	96 [25.4]	100.7 [26.6]	119.2 [31.5]	126 [33.3]	137.7 [36.4]	156 [41.2]
Weight	kg [lb]	Axial 19 [41.9], Radial 24 [52.9]				Axial 23.1 [51.0], Radial 27.3 [60.2]		
Pump Model		Frame J (cont.)		Frame F		Frame E		
Maximum displacement	cm ³ [in ³]	65 [3.97]	75 [4.58]	74 [4.52]	90 [5.49]	100 [6.1]	130 [7.93]	147 [8.97]
Cont. working pressure	bar [psi]	260 [3770]	260 [3770]	310 [4500]	260 [3770]	310 [4500]	310 [4500]	260 [3771]
Max. working pressure		350 [5075]	350 [5075]	400 [5800]	350 [5075]	400 [5800]	400 [5800]	350 [5075]
Continuous input speed	min ⁻¹ (rpm)	2500	2400	2400	2200	2800	2200	2100
Theoretical flow	l/min [US gal/min]	162 [42.9]	180 [47.5]	177.6 [47.4]	198 [52.8]	245 [64.7]	286 [75.6]	308 [81.4]
Weight	Axial	kg [lb]	23.1 [51.0]	29.5 [65.0]		51.3 [113]		
	Radial		27.3 [60.2]	32.6 [71.9]		54.9 [121]		



Frame J Axial (75 cm³/rev)



Frame E Axial (100 cm³/rev)



06.03.2025 / Certified Power Solutions

Perrysburg, OH
(419) 873-7411
Fridley, MN
(952) 894-5700

Mundelein, IL
(847) 573-3800
Bridgeton, MO
(314) 344-3300

Des Moines, IA
(515) 244-7411
Dickinson, ND
(701) 225-8685



SCAN ME