

# SNOWPAK™ ONE-TON SOLUTION

Streamlined Plow, Spread & Hoist Controls for One-Ton Trucks



Purpose-built for commercial businesses and public works, SnowPak is a robust, multi-functional manifold block designed for hoist, conveyor, spreader, and plow applications.





## Plow, Spread, and Haul It Your Way

Suitable for use by both municipalities and commercial businesses, SnowPak is the quickest, simplest way to keep your one-ton trucks plowing, spreading, and lifting without sacrificing performance and reliability.

With SnowPak, fleet owners, managers, and drivers of one-ton trucks can handle hoist, auger, spreader, and plow applications with confidence. This powerful solution is available for all NTEA Class 3-6 vehicles and provides all the necessary capabilities in a single package, making it easy to use and highly efficient. SnowPak enables you to outfit and upfit your one-ton trucks with equipment that's optimized for even the toughest jobs.

## Benefits at Every Level

**Fleet Managers and Business Owners:** Effectively equip your one-ton fleet to clear roads and keep the public safe during snow events.

**Maintenance and Operations:** Quicker install, less maintenance, and lower material costs help you get the job done on time and on budget.

**Drivers:** Simpler controls and a more ergonomic form factor allow you to stay focused on the road.

## SnowPak™ One-Ton

- Stainless steel valve/tank combination  
- 24.95" D x 23.3" W x 22.5" H
- Side frame rail mount
- 15 gallon capacity
- Saves on fuel and reduces heat during operation

\*Pump/PTO sold separately



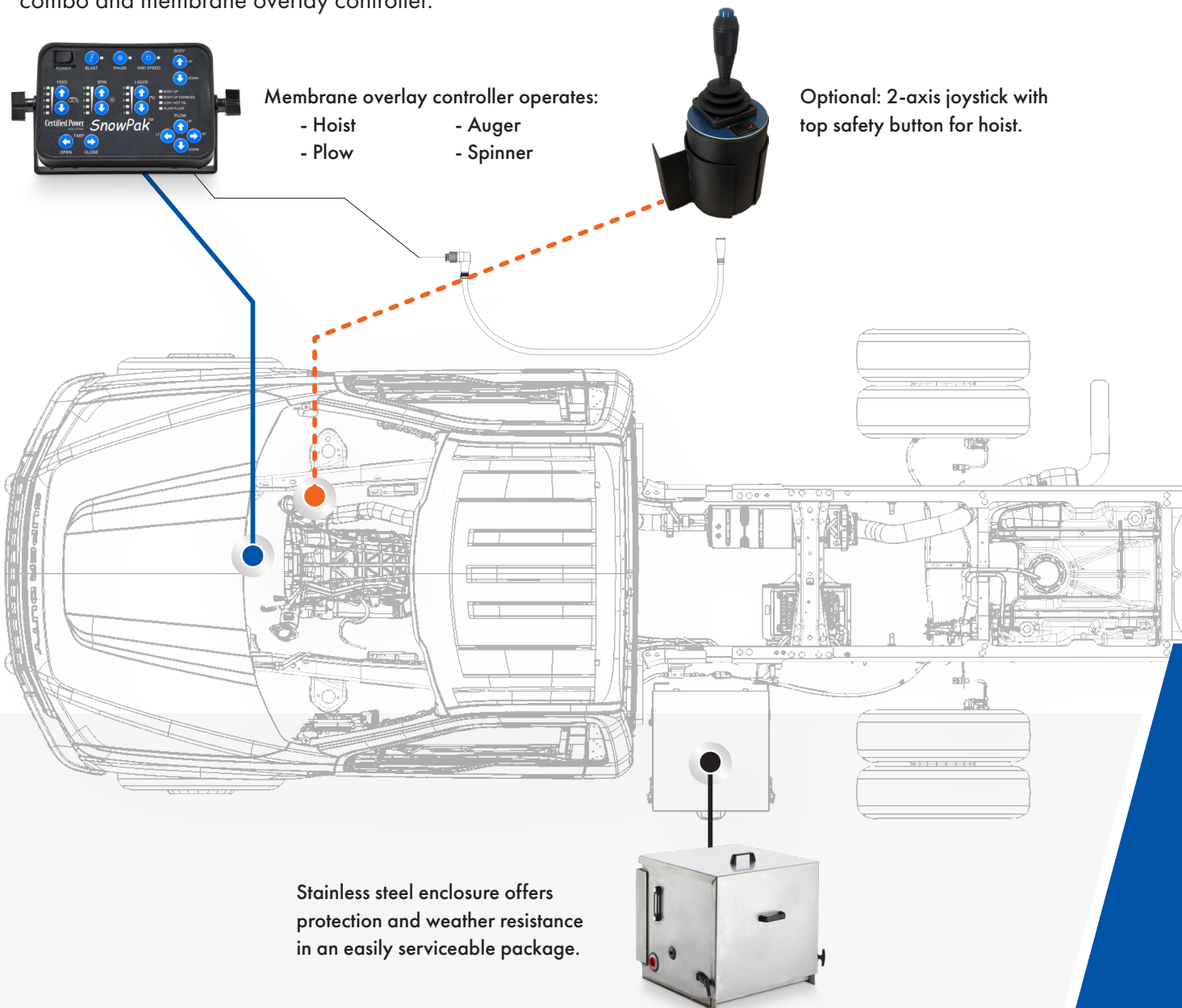
## How It Works

### Functions:

- Hoist: 4-way, double-acting for secure load control
- Plow up/down: 3-way single acting for smooth plow operation and efficient performance
- Plow angle: 4-way double acting for safe operation of equipment
- Auger: 2-way single acting, for dispensing granular material.
- Spinner: 2-way single acting lane width control.

## A Complete One-Ton Solution

The SnowPak base package (SnowPak-101) includes a stainless steel valve/tank combo and membrane overlay controller.



### Stainless Steel Valve/Tank Combination Specifications

Dimensions [in]	24.95" D x 23.3" W x 22.5" H
Type	Side frame rail mount
Capacity	15 gallon
Tank filter	Cellulose, 10 micron, includes fill and 10 micron filtered breather
Sight gauge	5 inch, included
Seals	Buna-N

### Hydraulic System Specifications \*

System type	Open center – requires fixed displacement
Flow	Up to 35 GPM
Pressure	3500 psi max
Actuation type	Electric, 12VDC, Deutsch connection

\* Pump/PTO sold separately

Functions	Type	Flow	Pressure	Special Features
Hoist	4 way, double-acting	6	3200 raise, 800 lower	Load holding valve
Plow up/down	3 way, single acting	1.9	1800	Low leak, plow priority, push pin manual override
Plow angle	4 way, double acting	1.9	1800	Load holding valve
Auger	2 way, single acting	14	1800	
Spinner	2 way, single acting	7	1800	

## SnowPak™ One-Ton System applicable to NTEA Class 3-6 Vehicles

Certified Power Solutions engineers and distributes practical, turnkey hydraulics solutions to municipalities, public works, and commercial organizations in the areas that need snow and ice removal solutions the most. They trust us to provide the integrated solutions they need today and ongoing support to keep them going for years down the line.

We want to know about what challenges you face.

Contact your CPS sales representative or call 763-493-9380 and let's start the conversation.